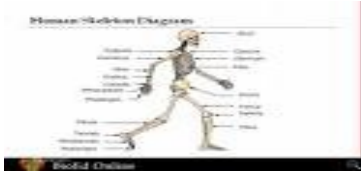


Ligament Types



- A -

- accessory
- acromioclavicular
- alar
- annular
- anococcygeal
- apical odontoid
- Arantius
- arcuate, lateral
- arcuate, medial
- auricularis
- axis of malleus

- B -

- Bardinet
- Barkow
- Bellini
- Berry
- Bertin
- Bichat
- bifurcated
- Bigelow
- Botallo
- Bourgery
- broad
- Brodie
- Burns

- C -

- calcaneocuboid
- calcaneofibular
- calcaneonavicular, external
- calcaneonavicular, lateral
- calcaneonavicular, plantar
- calcaneotibial
- Caldini
- Campbell suspensory
- Camper
- capsular
- cardinal
- caroticoclinoid
- carpal dorsal

- carpal palmar
- carpometacarpal, dorsal
- carpometacarpal, palmar
- caudal
- cervical
- check, lateral
- check, medial
- ciliary
- Civinini
- Clado
- collateral, fibular
- collateral, metatarsophalangeal
- collateral, radial
- collateral, tibial
- collateral, ulnar
- Colles
- conoid
- Cooper
- coracoacromial
- coracohumeral
- corniculopharyngeal
- coronary (knee)
- coronary (liver)
- costoclavicular
- costocolic
- costotransverse, anterior
- costotransverse, middle
- costotransverse, posterior
- costoxiphoid
- cotyloid
- cricoarytenoid posterior
- cricopharyngeal
- cricosantorinian
- cricothyroid
- cricotracheal
- crucial
- cruciate of atlas of spine
- cruciate of knee
- cruciate of leg
- cruciform
- Cruveilhier
- cubonavicular
- cuneocuboid
- cystoduodenal

- D -

- Denonvillier
- dental
- denticular
- Denuce
- diaphragmatic (kidney)

- E -

- epihyal
- external lateral (wrist)

- F -

- falciform
- falciform (liver)
- fallopian
- Ferrein
- Flood
- fundiform (penis)

- G -

- gastrolial
- gastrophrenic
- gastrosplenic
- Gerdy
- Gillette suspensory
- Gimbernat
- gingivodental
- glenoid
- glossoepiglottic
- Gunz

- H -

- Helmholtz
- Henle
- Hensing
- hepatocolic
- hepatoduodenal
- hepatogastric
- hepatorenal
- Hesselbach
- Heuck
- Hey
- Holl
- Humphry
- Hunter
- hypoepiglottic
- hypsiloid

- I -

- iliolumbar
- iliopectineal
- iliotrochanteric
- infundibulo-ovarian
- infundibulopelvic
- inguinal
- intercarpal
- interchondral
- interclavicular
- interclinoid
- intercornual
- intercostal

- intercuneiform
- interfoveolar (eye)
- intermetacarpal
- intermetatarsal
- internal lateral (wrist)
- interspinous
- intertransverse
- intraarticular
- ischiofemoral

- J -

- Jarjavay
- jugal

- K -

- Krause median puboprostatic

- L -

- laciniate
- lacunar
- Lannelongue
- lateral (bladder)
- Lauth
- lienophrenic
- ligament teres of liver
- ligamenta flava (spine)
- ligamentum nuchae
- Lisfranc
- Lockwood's
- longitudinal
- lumbocostal
- Luschka

- M -

- Mackenrodt
- malleolar
- Mauchart
- Meckel

- N -

- nuchal

- O -

- obicular (radius)

- occipitoaxial (membrana tectoria)
- odontoid
- ovarian

- P -

- palpebral, lateral
- palpebral, medial
- pectinate (iris)
- pectineal
- perineal
- Petit
- phrenicosplenic
- phrenogastric
- phrenosplenic
- phyrenicocolic
- pisiunciform
- pisohamate
- pisometacarpal
- plantar
- popliteal arcuate
- popliteal oblique
- Poupart
- pterygomandibular
- pterygospinous
- pubic
- pubocapsular
- pubofemoral
- puboprostatic
- pubovesical
- pulmonary

- Q -

- quadrate

- R -

- radiate
- radiocarpal
- Retzius
- rhomboid
- Robert
- round

- S -

- sacrococcygeal
- sacroiliac, anterior
- sacroiliac, interosseous
- sacroiliac, posterior
- sacrosciatic
- sacrospinous

- sacrotuberous
- Sappey
- sheath
- Soemmering
- sphenomandibular
- spinoglenoid
- spiral of cochlea
- spring
- Stanley cervical
- stellate
- sternoclavicular
- sternocostal
- sternopericardial
- stylohyoid
- stylomandibular
- suprascapular
- supraspinous
- suspensory
- sutural
- synovial

- T -

- talocalcanean
- talofibular
- talonavicular
- talotibial
- tarsal
- tarsometatarsal
- tarsotibial
- temporomandibular
- Teutleben
- thyroepiglottic
- thyroepiglottidean
- thyrohyoid
- tibiofibular
- tibionavicular
- transverse
- trapezoid
- Treitz
- triangular

- U -

- umbilical
- uterosacral

- V -

- vaginal
- Valsalva
- ventricular
- vertebropelvic
- Vesalius
- vesicouterine

- vestibular
- vocal
- Von Helmholtz

- W -

- Weitbrecht
- Winslow
- Wrisberg

- Y -

- yellow
- Y-shaped

- Z -

- Zinglas
- Zinn